

World Class Polymetallic Discovery

Mining Metals That Matter

Cu

Ni

PGE

Ag

Au

Disclaimer

Forward Looking Statements

Except for historical information contained herein, this presentation may contain forward looking statements including but not limited to comments regarding predictions and projections. Forward looking statements address future events and conditions and therefore involve inherent risks and uncertainties. Although Power Metallic Inc believes that such expectations are reasonable, there can be no assurance that such expectations will prove to be correct, and therefore actual results may differ materially from those currently anticipated in such statements. You are cautioned not to place undue reliance on any such forward looking statements, whether made in this presentation or in any question-and-answer period related to this presentation.

Joe Campbell, P .Geo, VP of Exploration of Power Metallic Inc is the Qualified Person who has reviewed and approved the technical disclosure in this presentation.

A Smart Money Investment

Select Investors



Robert Friedland
Founder, Ivanhoe Mines



Rob McEwen
CEO, McEwen Mining



Gina Rinehart
Chairwomen,
Hancock Prospecting



Discoveries

Cu-PGE- Ni-Ag-Au
Lion, Tiger, & NISK...



Fully Funded

For exploration
through 2026



Active Drilling

100,000m drill program
by end of 2026



Sustainable

Powered by
clean hydropower



Prime Location

Located in
Quebec, Canada

Company Overview

Share Price as of July 7, 2025 C\$1.09

Basic Shares Outstanding 221.12mm

Basic Market Cap. C\$243mm

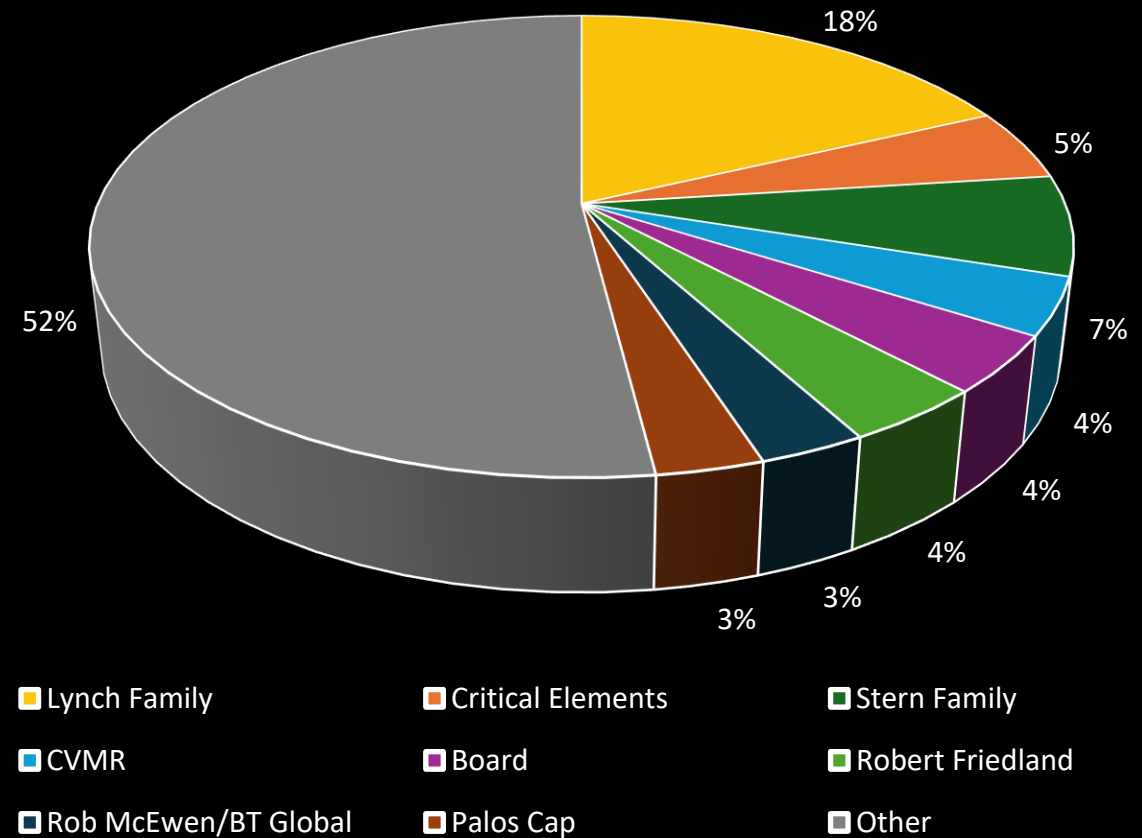
Warrants Issued (with average C\$0.53) 34.34mm

Options Issued (with average C\$0.46) 18.16mm

Fully Diluted Shares 273.62mm

Fully Diluted Market Cap. 300.98mm

Key Stakeholders



Warrants are more than 80% owned by Key Stakeholders. Expected to be crossed to large new institutions

Quebec, Canada

A Top Tier Location

Nisk Main and Lion Discovery are high-grade polymetallic mineralization's for multiple battery metals including Nickel, Copper, Cobalt, Palladium and Platinum.

Located in Quebec, Canada Nisk Benefits From:



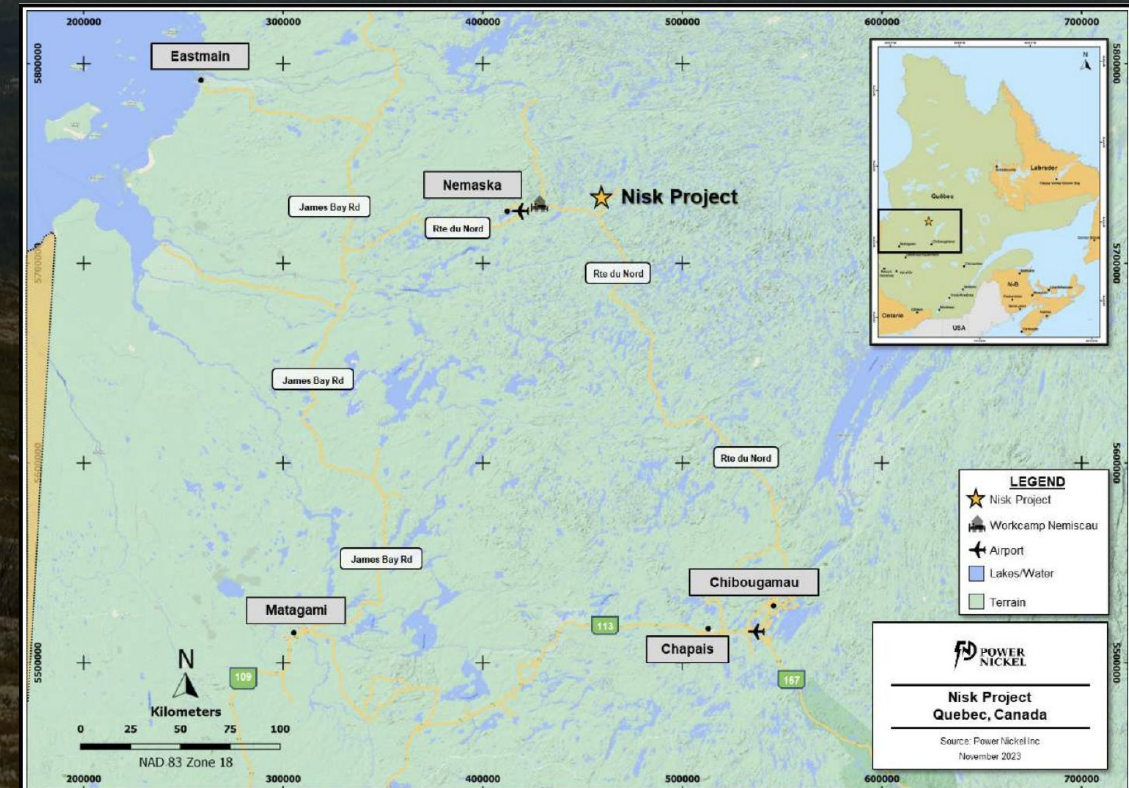
Generous tax credits that cover 50% of exploration and development costs.



Stable political environment with strong government and first nation partners.

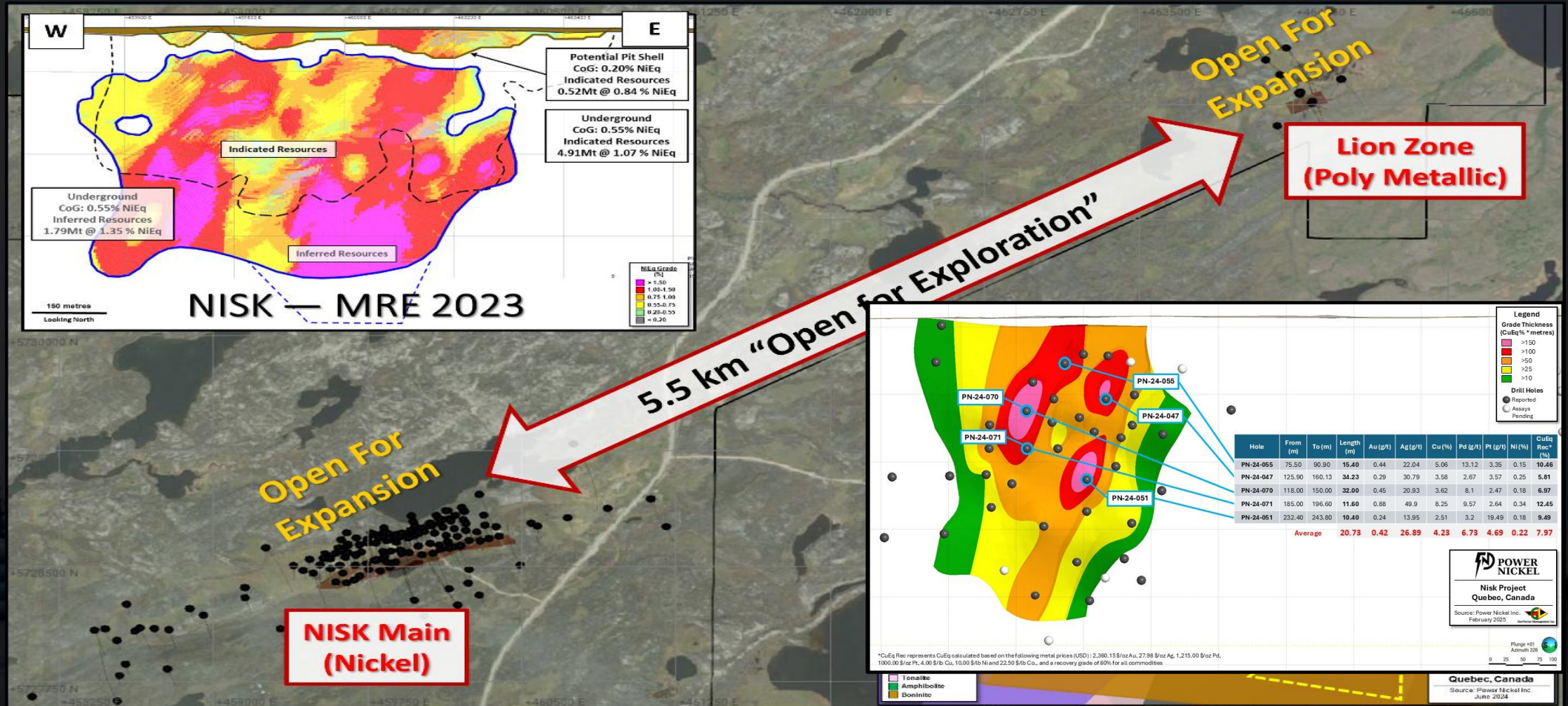


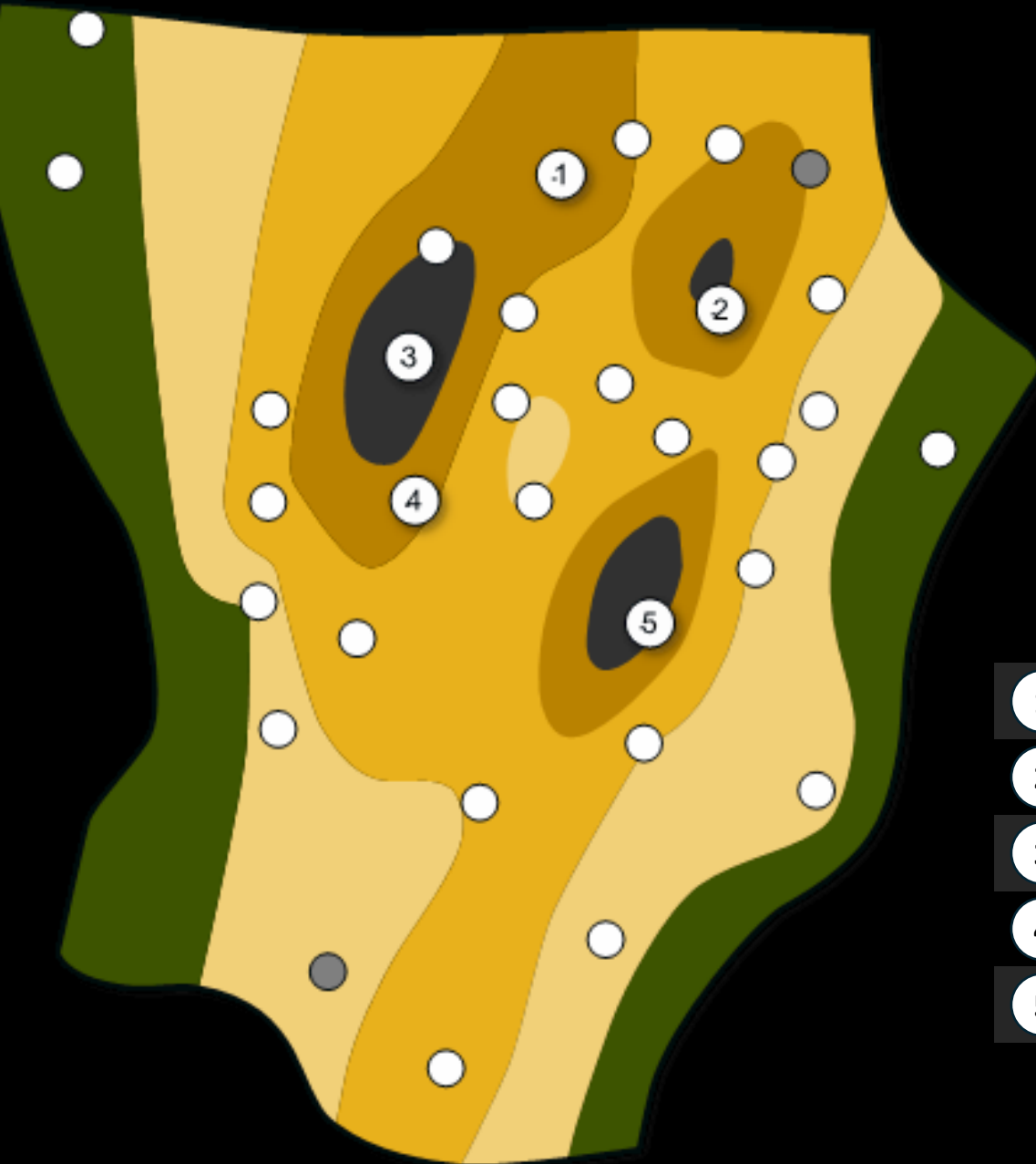
Hydro-Quebec substation across the road supplying low-carbon inexpensive hydropower.



How it Began...

The Nisk Discovery





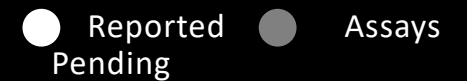
Lion Zone

Exceptional Grades and Thickness

Grade Thickness (CuEq%/meters)



Drill Holes



| | | From (m) | To (m) | Length (m) | Au (g/t) | Ag (g/t) | Cu (%) | Pd (g/t) | Pt (g/t) | Ni (%) | CuEq (%) |
|---------|-----------|-------------|-----------|---------------|-------------|-------------|-----------|-------------|-------------|-----------|-------------|
| 1 | PN-24-055 | 75.5 | 90.9 | 15.4 | 0.4 | 22.0 | 5.1 | 13.1 | 3.4 | 0.2 | 10.5 |
| 2 | PN-24-047 | 125.9 | 160.1 | 34.2 | 0.3 | 30.8 | 3.6 | 2.7 | 3.6 | 0.3 | 5.8 |
| 3 | PN-24-070 | 118.0 | 150.0 | 32.0 | 0.5 | 20.9 | 3.6 | 8.1 | 2.5 | 0.2 | 7.0 |
| 4 | PN-24-071 | 185.0 | 196.6 | 11.6 | 0.9 | 50.0 | 8.3 | 9.6 | 2.6 | 0.3 | 12.5 |
| 5 | PN-24-051 | 232.4 | 243.8 | 10.4 | 0.2 | 14.0 | 2.5 | 3.2 | 19.5 | 0.2 | 9.5 |
| Average | | | | 20.7 | 0.4 | 26.9 | 4.2 | 6.7 | 4.7 | 0.2 | 8.0 |

How Big and How Rich?

The Nisk Project

The Nisk Main and Lion Zone discoveries are already substantial, with further exploration underway



\$179M
Market Cap*

Nisk/Lion Discovery
Project Name

7.1Mt
Resources

NiEq 7.1Mt @ 1.1%
CuEq+** 9.4Mt+ @ 7%



\$472M
Market Cap

Green Bay/Ming
Project Name

13.8Mt
Resources

CuEq
2.0%

Chalice Mining **\$439M**
Market Cap

Gonneville
Project Name

350 Mt
Resources

CuEq 1%
Measured & indicated attributable



\$1.27B
Market Cap

Vares
Project Name

13.8Mt
Resources

Cu 0.5%
Zn 5.2%
Au 1.4 g/t
Ag 187 g/t
Pb 3.3%



\$1.14B
Market Cap

McIlveena Bay
Project Name

25.7Mt
Resources

Cu 1.2%
Zn 2.4%
Au 0.5 g/t
Ag 1.53 g/t
CuEq 2.5%



NORNICKEL

\$20.6B
Market Cap

MMC Norilsk Nickel
Project Name

1.8Bt
Resources

Ni 6.5Mt
Cu 11.6Mt
PGMs 118Mt oz

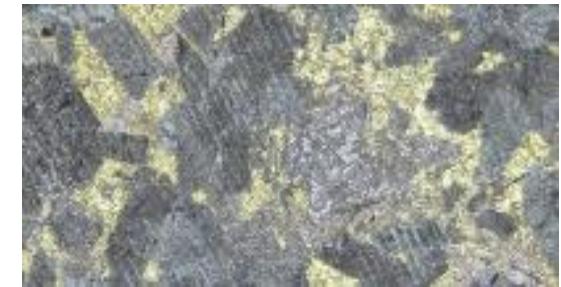
Polymetallic

The World's Most Valuable Deposit Types

Orthomagmatic Ni-Cu-PGE Deposits



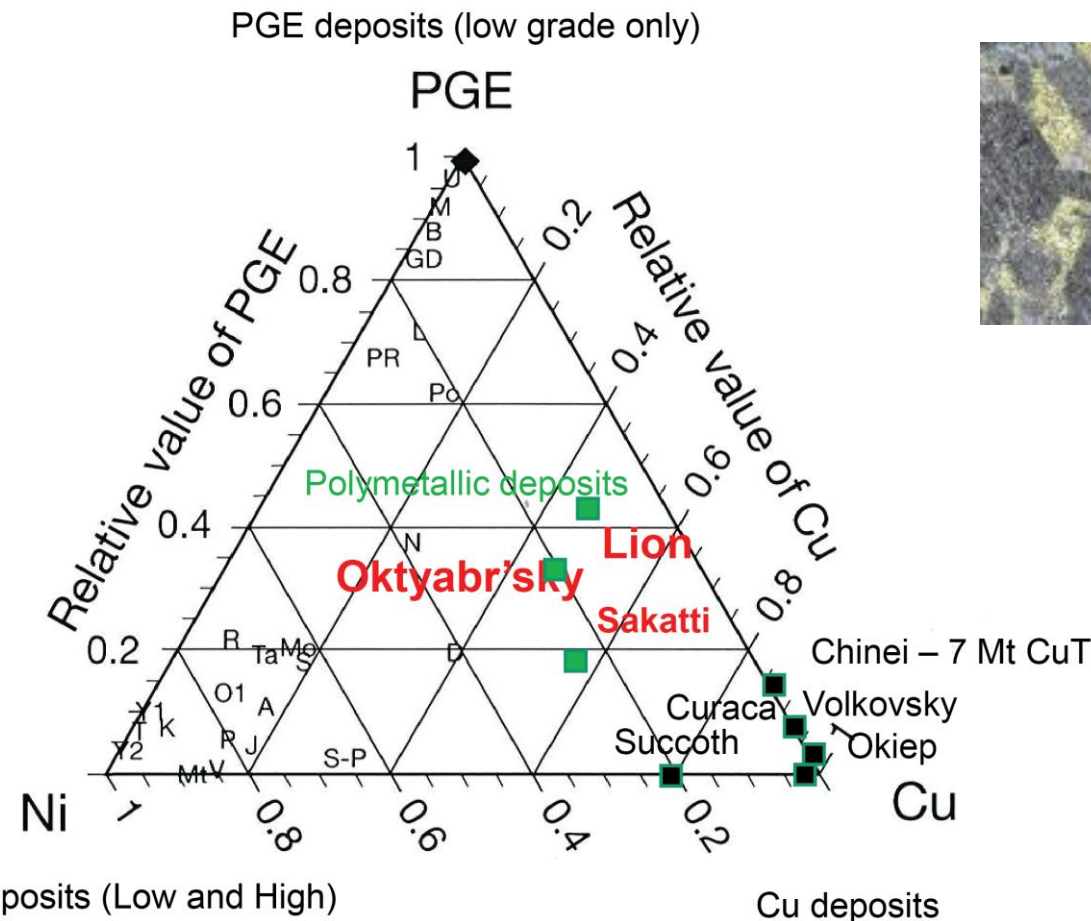
Merensky Reef



Sakatti



Voisey's Bay



Power Metallic

An Exciting New Discovery

The Nisk project is comparable to some of the largest polymetallic discoveries in history.

Along with a 7.1Mt NiEq resource, the Nisk project also holds an estimated 9.4Mt* in CuEq resources.

*Based on analyst estimate by Hannam and Partners

16.5Mt*
Potential Resource
7.1Mt NiEq &
9.4Mt+ CuEq*

Nisk
7.1Mt
(2023)

Sakatti
40.9Mt
(2006)

Voisey's Bay
141Mt
(1993)

Commodity to Equity Ratio



Source: FactSet, Jefferies

Commodity
54-Year Chart

Trading at or near all
time lows

Upsized \$50M Financing in 2025

Fully funds 100,000m drilling into 2026

"Raising the \$50 Million will enable us to accelerate the pace of exploration dramatically...These are exciting times for our management team and our shareholders. We very much appreciate the faith shown by our newest investors and look forward to delivering even more impressive results in the weeks and months ahead."

- **Terry Lynch**
Chief Executive Officer, Power Metallic



Smart Team



Peter Kent
Chairman



Terry Lynch
CEO



Greg McKenzie
Director



Duncan Roy
VP, IR



Joe Campbell
VP, Exploration



Steve Beresford
Director

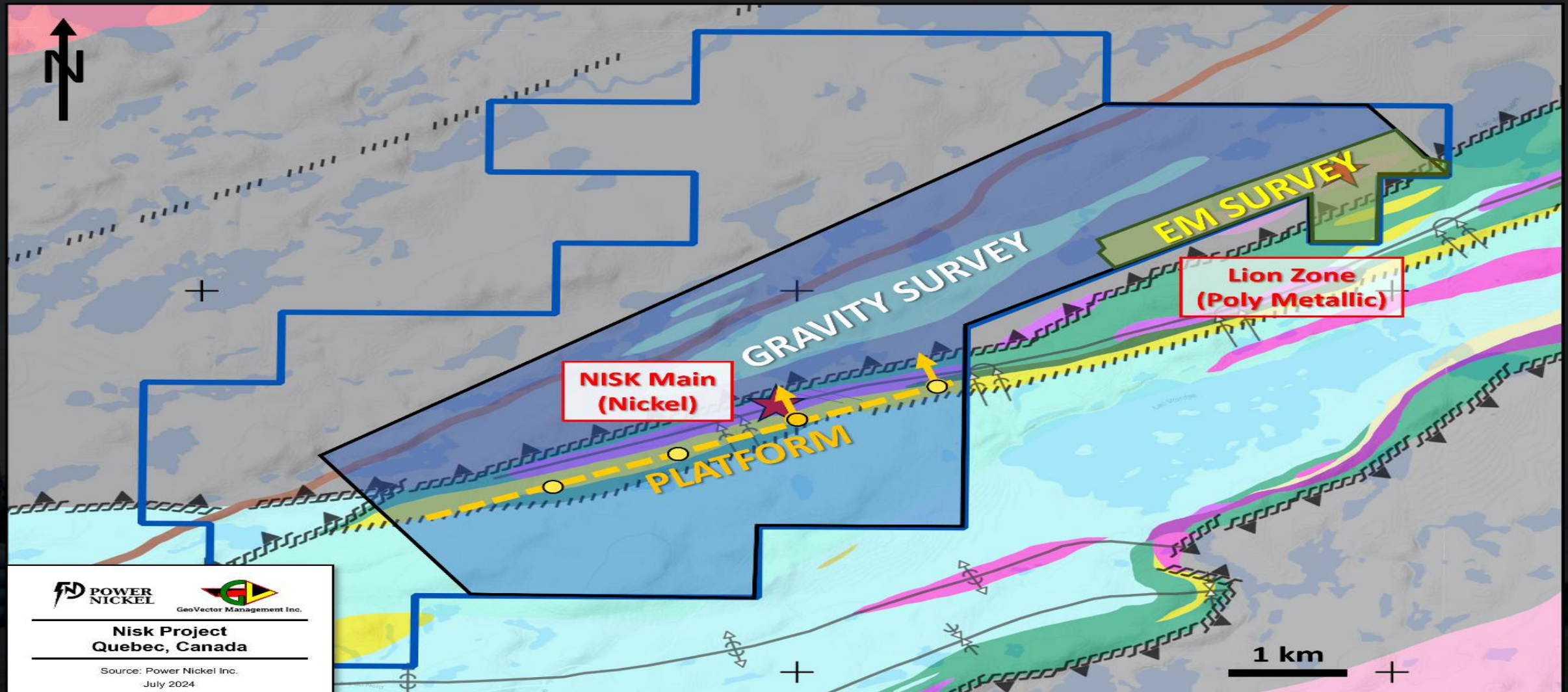


Les Mallard
Director



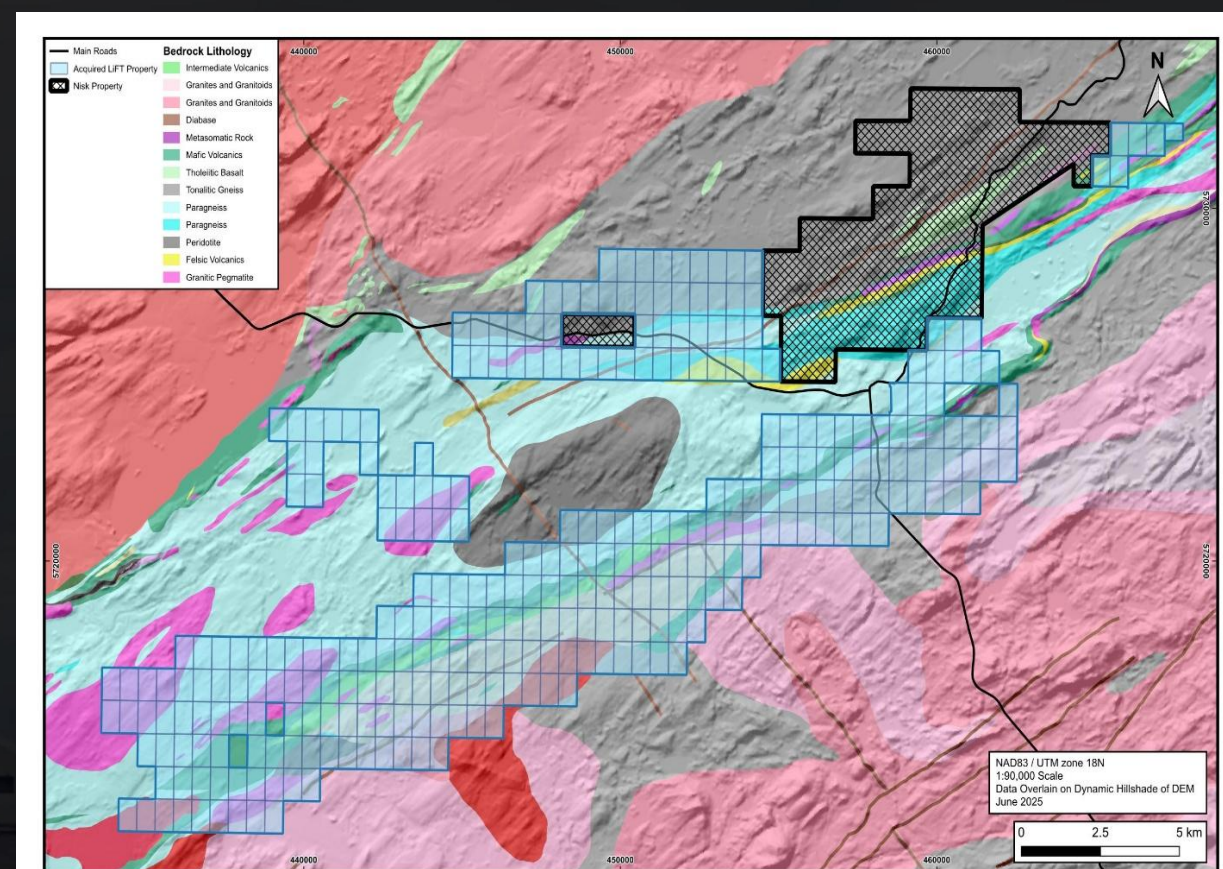
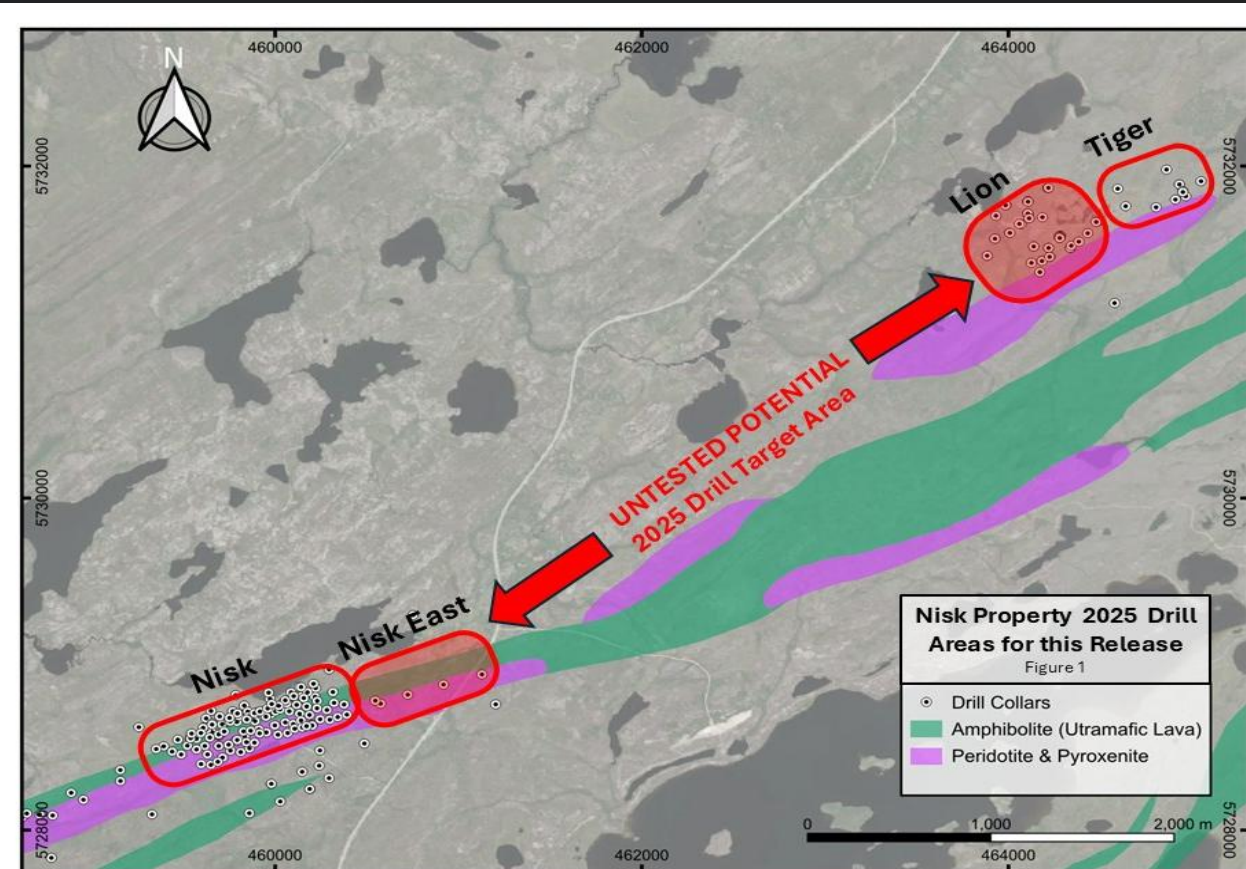
Ximena Perez
MD Chile

Exploration and Drilling Ongoing

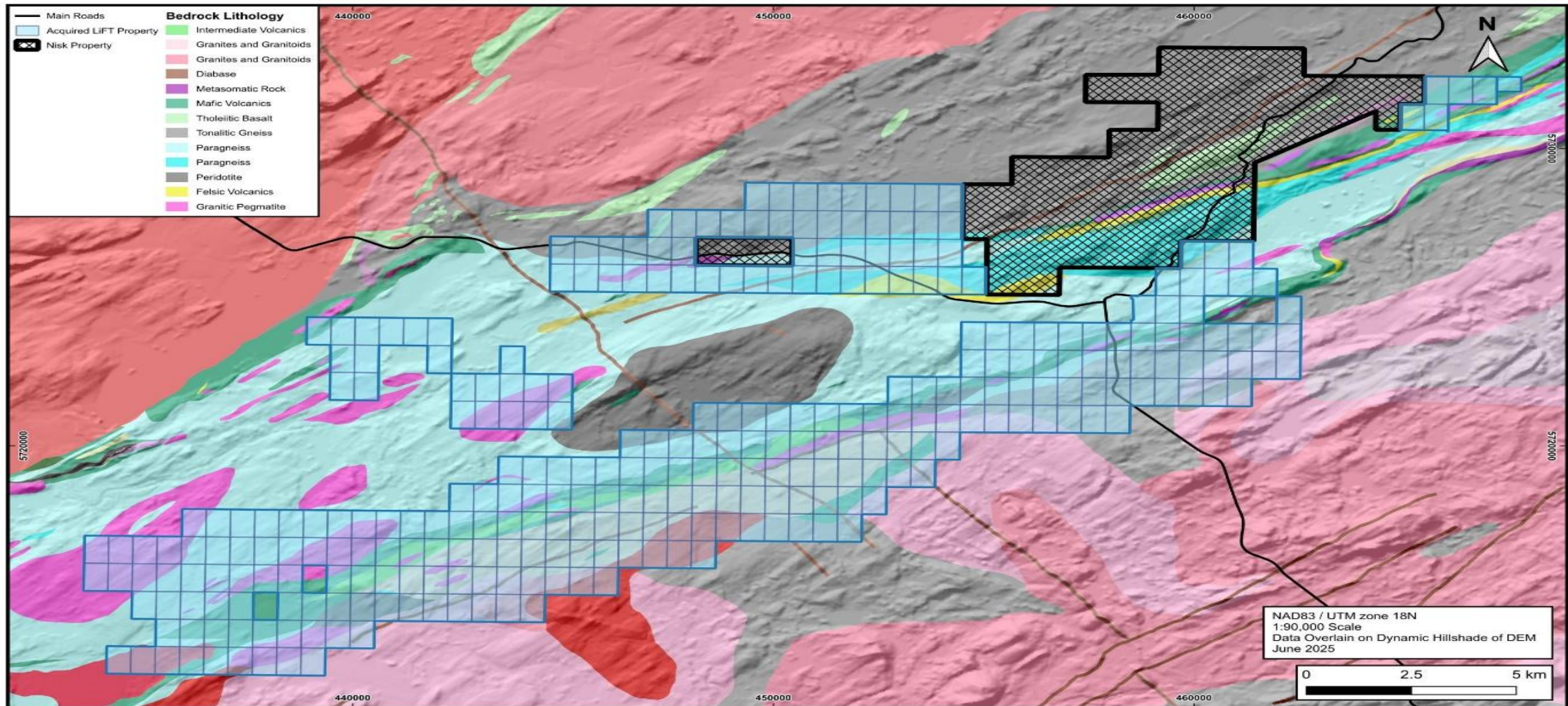


Exploration and Drilling -4Rigs now – 6 In Oct

Current + LiFT



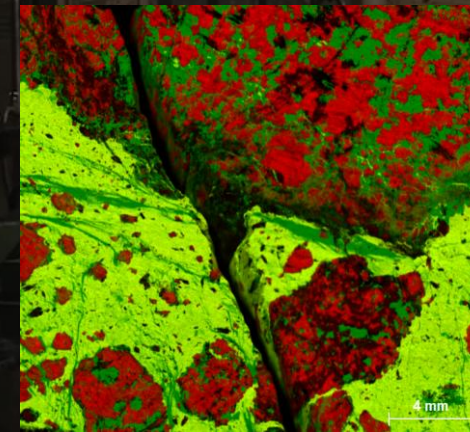
LiFT Acquisition 300+% Increase



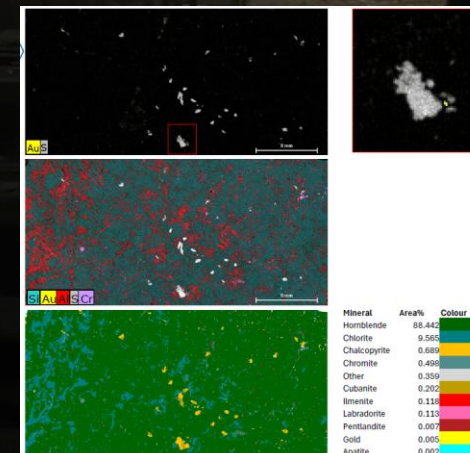
Metallurgical & Mineralogy

Work Initiated on Lion Zone

- PGE Ag and Au are hosted by Chalcopyrite similar to the footwall Cu-PGE deposits at Sudbury. Cu and PGE recoveries are likely strongly correlated.
- First phase characterization underway. Results due Q2.
- Low grade PGE = complex, large studies, long lead into production (heterogeneity becomes crucial to risk hence expanded studies).
- High grade PGE = simple, shorter timeline to production (heterogeneity is covered high correlation with visuals and grade).
- Polymetallic doesn't mean complex. Low grade means complex. Low grade means limited tolerance.



Tornado (micro XRF) image of chalcopyrite-dominant sulfide clasts (red) in pyrrhotite rich matrix (Green). PGM and Tellurides have only been found to date inside chalcopyrite (Red).



Tornado (micro XRF) image of disseminated sulfide halo, showing presence of free Gold with chalcopyrite.

2025 Milestones



Ramping Exploration

6 Rigs operational at NISK, a substantial and constant flow of assays to release.



Resource Expansion

As evidence by assay results and analyst upgrades.



Land Package

Increasing our interest by over 400%.



Major Exchanges

Upgrade to senior exchanges.



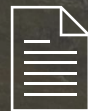
Metallurgy Report

Metallurgical update on our Polymetallic deposits.



Spinoff

Chilean Metals becoming a publicly traded entity.



Feasibility Study

Release of our first Feasibility Study from CVMR covering the NISK Main nickel body.



Global Opportunities

Business development opportunities in Europe and Asia.

Why invest in Power Metallic?



High-grade Polymetallic Discovery



Fully Funded Through 2026



Supported by High Profile Mining Investors



100,000m Exploration Program with 6 Rigs



World-class exploration and development team

TSX.V: PNPN | OTC:PNPNF | FRA: IVV1



Have Questions?

Contact Power Metallic Mines!

Duncan Roy, VP IR

T: (416)-580-3862

E: duncan@powermetallic.com

Power Metallic Mines Inc.

The Canadian Venture Building
82 Richmond St East, Suite 202
Toronto, ON M5C 1P1

Appendix

Industry Invests Feasibility Study



[cvmr][®]
CORPORATION

CVMR[®] Carbonyl Plant

CVMR[®] Nickel Nano Powder

Graphite from CO₂

The image block features the CVMR Corporation logo at the top. Below the logo are three circular inset images. The first image on the left shows an industrial facility with yellow scaffolding and pipes, labeled 'CVMR[®] Carbonyl Plant'. The middle image shows a microscopic view of numerous small, spherical particles, labeled 'CVMR[®] Nickel Nano Powder'. The third image on the right shows a group of seven people in blue lab coats standing in front of industrial equipment, labeled 'Graphite from CO₂'. At the bottom left of the block is a partial view of a blue globe showing the Americas.

- CVMR Study to de risk Commercialization of Nisk
- CVMR process enables higher and broader metal yields
- CVMR finished products achieve 2-3x LME Price
- CVMR most environmentally friendly way to make Nickel
- CVMR recycling completes Cradle to Grave to Cradle

The World's First Carbon Neutral Polymetallic Mine

The Nisk Discovery

Cleaner Metals Will Yield Higher Prices



Offset Drilling CO2

Done Karbon X — Verra
Certified...



Hydro Power

Utilize Green Hydro Power
to Provide Energy For
Mining - Planned Use



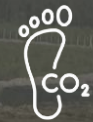
Sustainable

Environmentally Friendly
Processing Design —
Planned



CO2

Ultramafic Tailings
Naturally Sequester CO2 -
Verification TBD

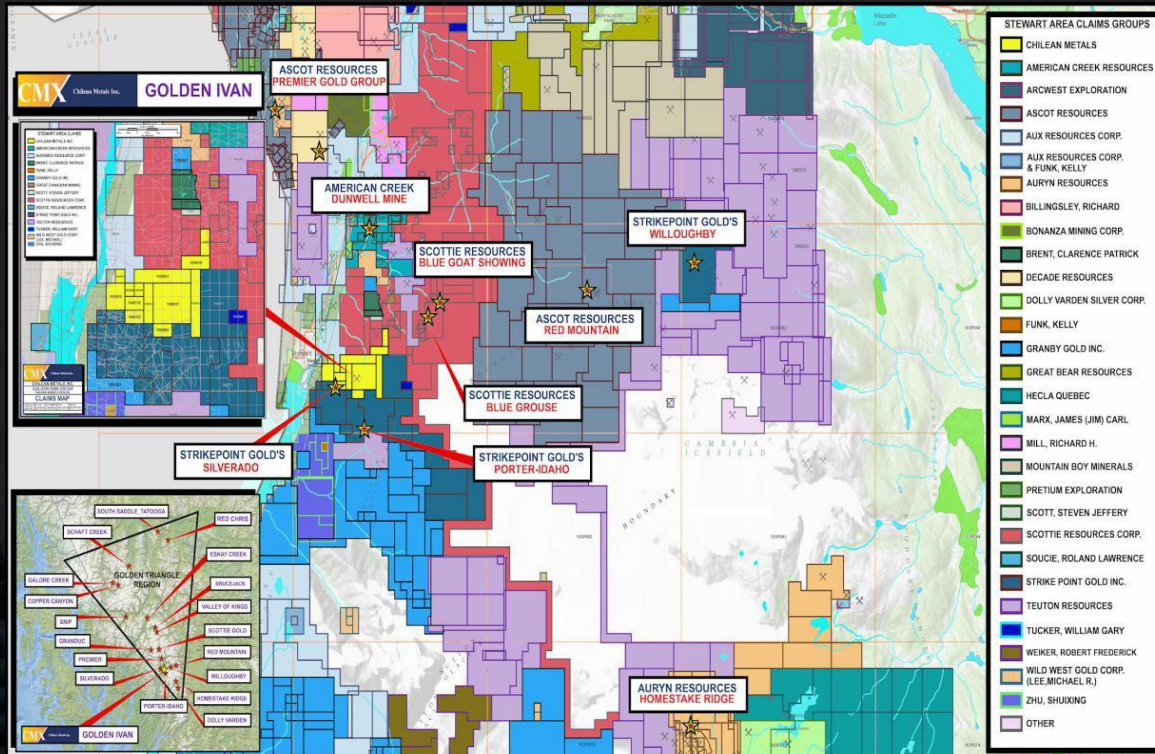


Footprint

CO2 Footprint Will Be
Audited & Reported -
Planned

Spinoff Chilean Metals

British Columbia



Chile



High-Grade Copper & Polymetallic Discoveries

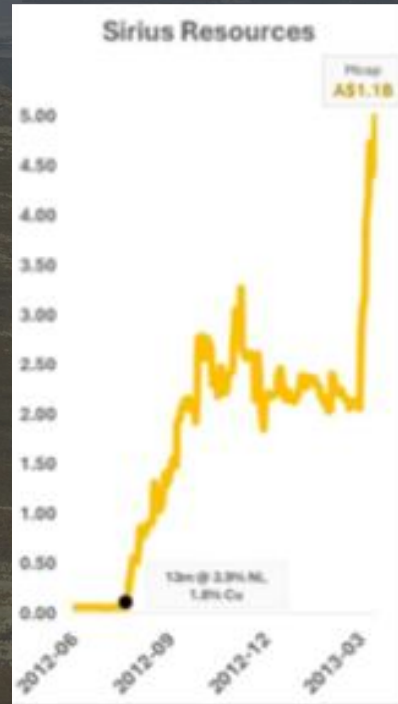
That Built Leading Companies

2009



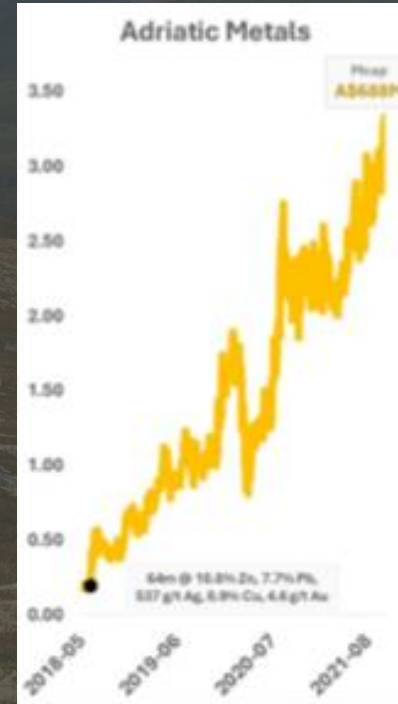
Stock up **164x**
In the first 22 months

2012



Stock up **100x**
In the first 8 months

2018



Stock up **17x**
In the first 40 months

2019



Stock up **5x**
In the first 24 months

2024



Stock up **9x**
In the first 11 months



Palladium

43-Year Chart

Another 2,111% move up, this time starting at 1,170, would mean target is 24,700...

Cutting Edge Technology

Ambient Noise Tomography (ANT)

Power Metallic has partnered with Australian-based Fleet Space Technologies, a developer and operator of a constellation of microsatellites that delivers universal connectivity across the globe, including the exploration of Nickel ore deposits at its NISK project. Power Metallic will use innovative sound mapping technology from Fleet Space to locate additional high-grade nickel sulfide deposits with a greater level of accuracy.

The satellite-enabled earth scanning technique is called Ambient Noise Tomography (ANT). Battery-powered devices known as 'Geodes', which can be transported by hand, are used to capture background vibrations from natural and man-made sources. The data can be used to develop a full 3D visualization of the subsurface down to 2 km in depth. With Fleet's Geodes being up to 10x more sensitive than existing nodal geophones, the exploration team can get a clear, rich image of what resources may be below ground in a period that can be as short as four days.

Historically nickel sulfide deposits are located in the form of pods in a geographic area. It is expected that the nickel ore deposits at NISK are also in the form of such pods. Currently, Power Metallic is exploring 1 square kilometer of its 45 square kilometer land package. Using Fleet Space's earth scanning technology, Power Metallic hopes to optimize its chances of finding additional deposits and increase its drilling accuracy as part of a well-developed drilling program.

